



RoadT15 Dubréka-Kouria

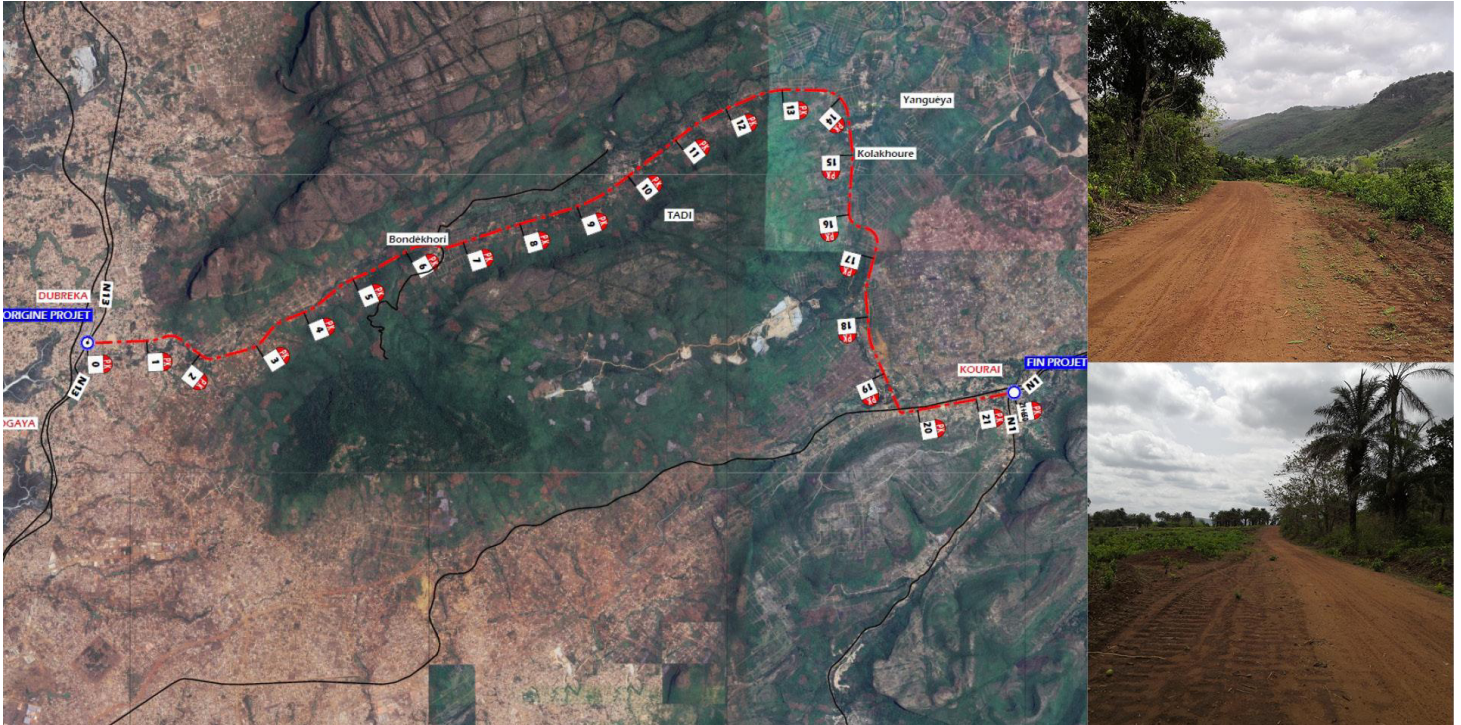
Conakry, Guinea / 2024

Structural type
Characteristics

Road
Dual carriageway with 2x2 lanes, median and lateral lanes, 22 km in length, including 3 interchanges and 4 metal bridges (maximum span of 37 m and maximum length of 169 m).

Client
Constructor
Scope

QG CONSTRUCTION UK LIMITED
QG CONSTRUCTION UK LIMITED
Detailed design of the road, including alignment, hydrology and drainage, structures, pavement, barriers, and signage.



The scope consists of the development of the conceptual project and detailed design project for the transversal road T15 "Dubreka-Kouria" in the Republic of Guinea Conakry.

Total length of the project is 22 km, between Dubreka and Kouria.

The design includes three interchanges, the first one at Dubreka (with road N13), the second with the future expressway "the Prince Route" (currently under construction) and the third one at Kouria (with road N1).

The new road will also cross the railway track near Kouria with a flyover, allowing future railway development, up to 4 tracks.

The new road will follow the same corridor than the existing dirt road, through a very mountainous terrain.

The village of Kolakhouré will be served with additional road with single carriageway 1x2 lanes and a length of 1.7 km.

The project includes 4 steel bridges (at interchanges and railway crossing) with 37 m max. span and 169 m max. length, and 30 hydraulic structures, including box culverts and pipes.

The following activities are included within the Scope of Works:

- Roadway (terrain model, alignment, earth works, cross sections)
- Hydrology and drainage
- Pavement
- Signalling
- Structures



C/ Barquillo 23, 2º | 28004 Madrid | España
T. (+34) 917 014 460 | F. (+34) 915 327 864
www.fhecor.com | fhecor@fhecor.es